

TANK BREATHER VALVE



This new safety breather valve protects closed tanks and vessels from damage due to excessive air pressure or vacuum caused by changes in air temperatures, gas pressure or pumping of product.



Model PV-SD

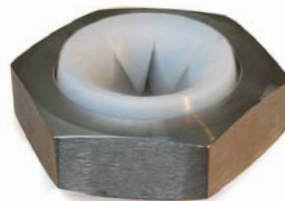
REGISTERED DESIGN

OPERATION

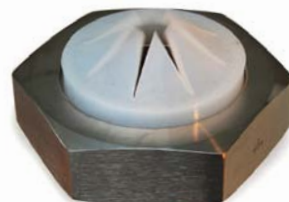
This breather valve automatically seals the tank under normal conditions.

Should the air pressure (+ve or -ve) inside the tank become excessive the valve will automatically open, so equalizing the pressure and preventing damage to the tank.

WE WOULD BE PLEASED TO SEND A SAMPLE VALVE TO YOU SHOULD YOU WISH TO CARRY OUT AN INSPECTION



OPEN POSITION (- ve pressure)



OPEN POSITION (+ ve pressure)



CLOSED POSITION

FEATURES

- Solid, low profile (approx. 50mm), stainless steel construction with a unique silicone diaphragm
- BSM connection (able to utilize your existing fitting)
- **Low price**...similar to many plastic vents
- Easy cleaning, open hygienic design, only 2 components.
- Allows high air flow rates
- Made in Australia

AR BLACK & CO

Winemaking Equipment • Stainless Steel Engineers

Ph: (08) 8333 1131 | Fax: (08) 8333 1141
Mobile: 0418 841 027 | enquire@arblack.com.au
Hender Avenue, Magill, South Australia, 5072
www.arblack.com.au

AR BLACK & CO

